

# 2020 Urban Water Management Plan and Water Shortage Contingency Plan

Santa Clara River Watershed  
Committee Meeting  
October 28, 2021

- The Urban Water Management Planning Act became part of the California Water Code in 1983
- The Act requires urban water suppliers serving more than 3,000 customers prepare an UWMP every five years
- UWMP's support long-term water resources planning to ensure water supplies are available to meet existing & future needs
- California Water Code requires that every urban water supplier prepare and adopt a water shortage contingency plan as part of its Urban Water Management Plan

## *Purpose*

- Define procedures to be used when water supply cannot meet demand, including drought, earthquakes, or water system failures

## *Components*

- Annual Supply and Demand Assessment
- Stages of Action
- Communication Protocols
- Enforcement
- Action Plan

# Current Water Supplies

## Ventura Water Supply

Lake Casitas

Ventura River

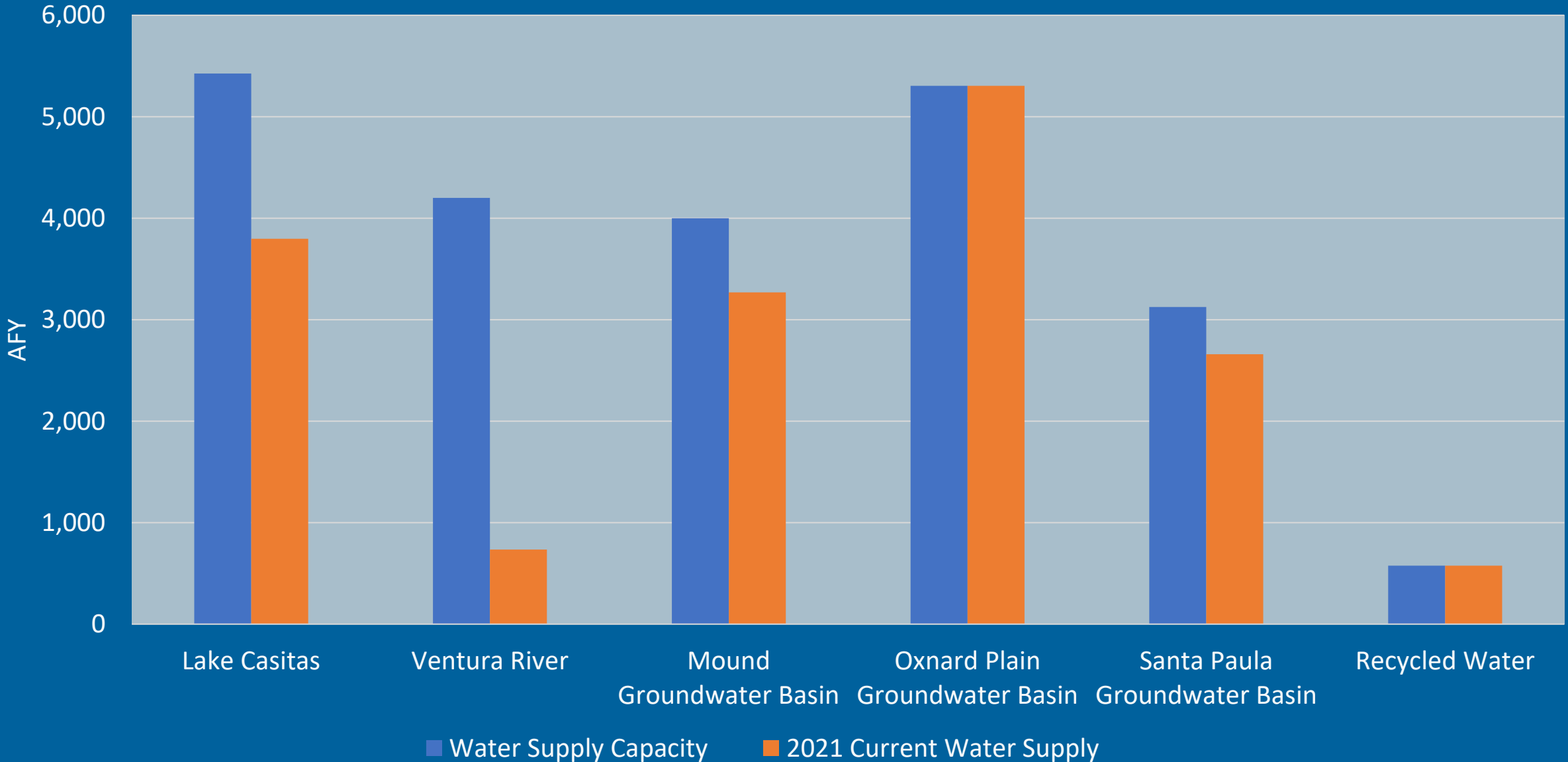
Recycled Water

Mound Basin

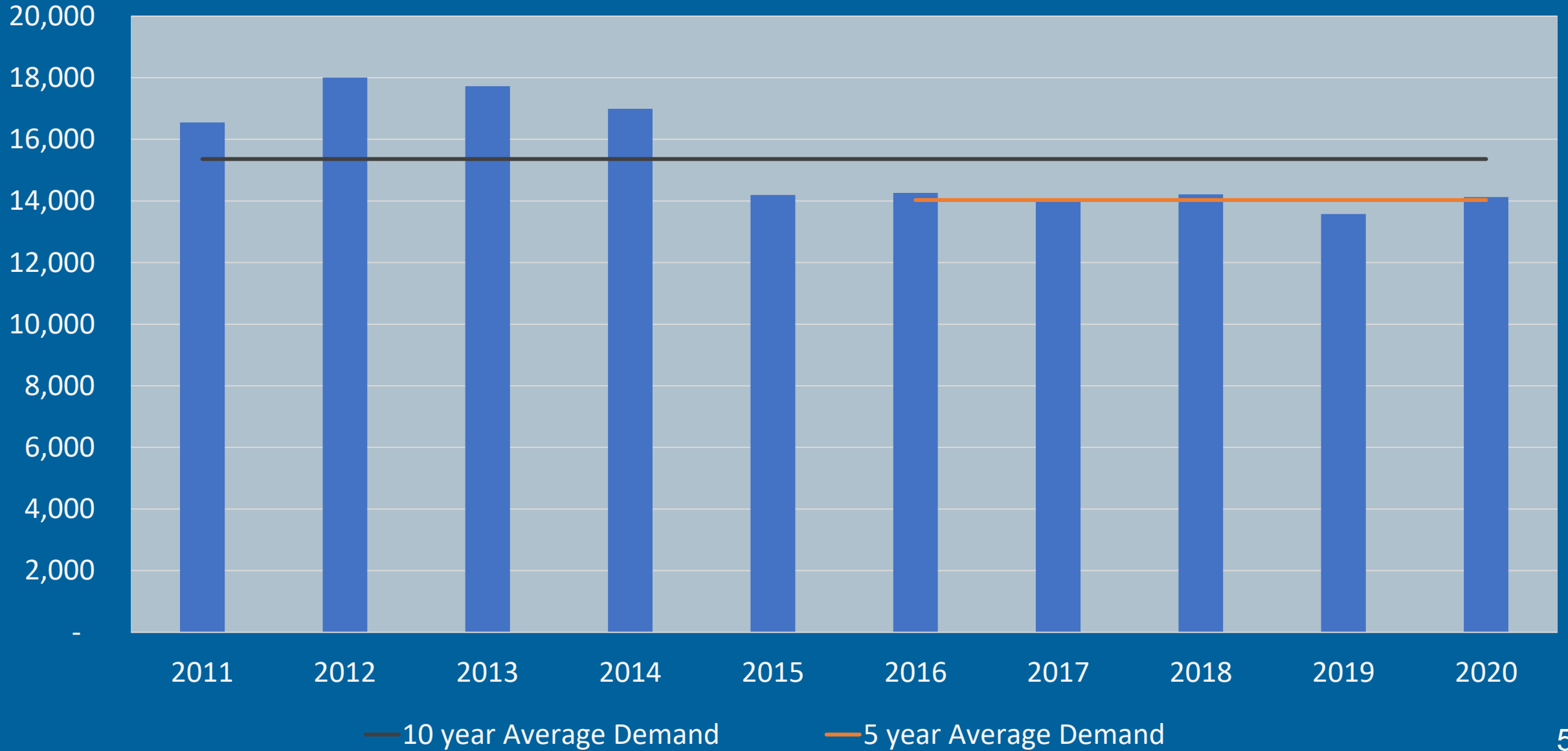
Santa Paula Basin

Oxnard Plain Basin

# 2021 Projected Supplies



# Historic Water Consumption



- Baseline demand (average of past 5 years)
- Adjustment factor applied based on climatic conditions
  - If rainfall on March 15<sup>th</sup> is less than 75% of normal, demand projections are increased by 5%
  - If rainfall on March 15<sup>th</sup> is less than 50% of normal, demand projections are increased by 10%

# Water Shortage Stages

Table 4-1: Water Shortage Stages and Triggers/Demand Reduction Goals

	Trigger	Demand Reduction Goal
<b>Advisory Stage 1</b>	Annual Supply Projection is between 0 and 10% below Demand Projection	10% Voluntary
<b>Moderate Stage 2</b>	Annual Supply Projection is greater than or equal to 10% and less than 20% below Demand Projection	10% Mandatory
<b>Stage 3</b>	Annual Supply Projection is greater than or equal to 20% and less than 30% below Demand Projection	20% Mandatory
<b>Severe Stage 4</b>	Annual Supply Projection is greater than or equal to 30% and less than 40% below Demand Projection	30% Mandatory
<b>Stage 5</b>	Annual Supply Projection is greater than or equal to 40% and less than 50% below Demand Projection	40% Mandatory
<b>Critical Stage 6</b>	Annual Supply Projection is greater than or equal to 50% of Demand Projection	50% Mandatory



2021 Supply Projection = **16,345 Acre Feet (AF)**

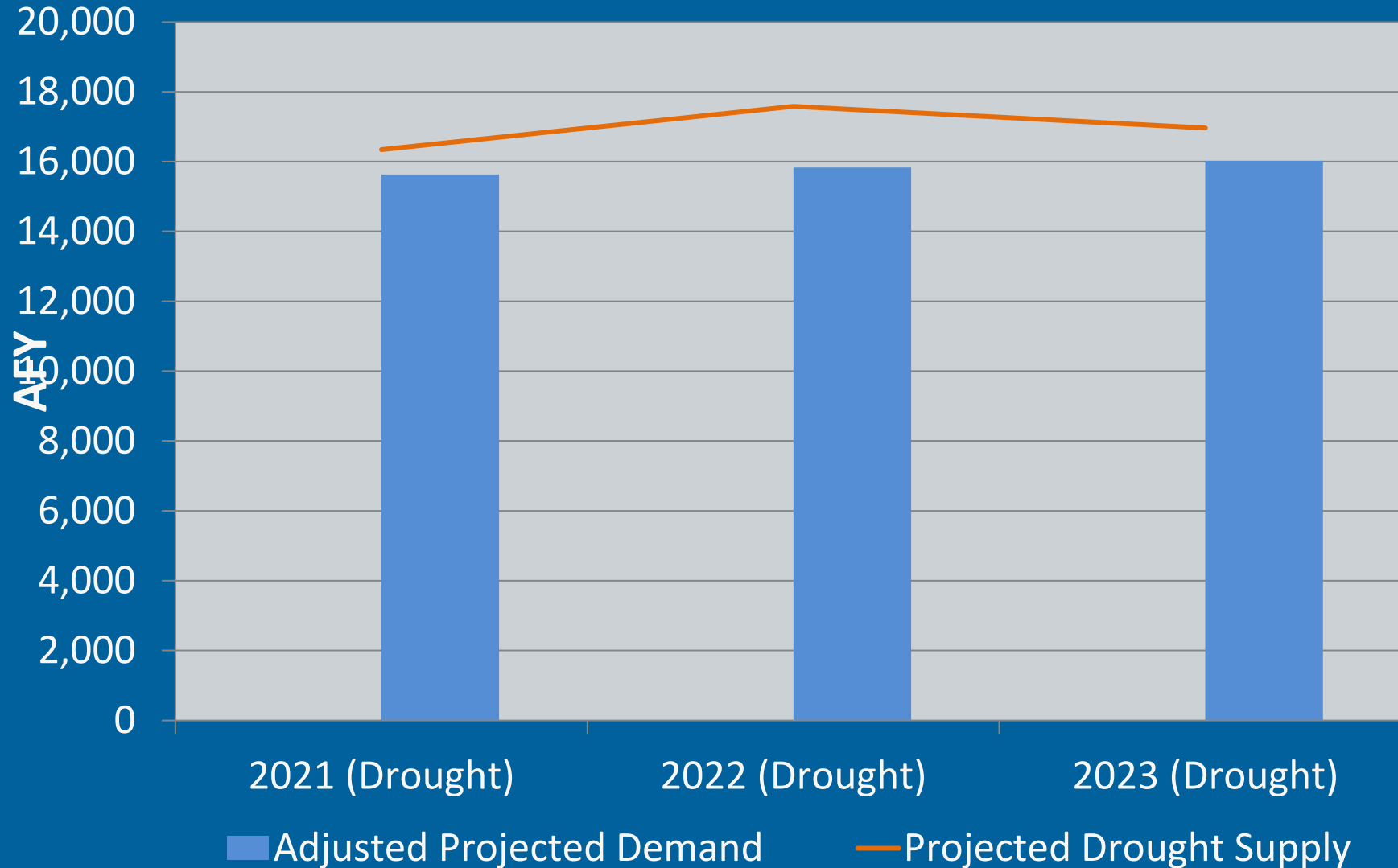
2021 Demand Projection = 14,210 AF

Climate adjustment factor = 10% (rainfall 23% of normal)

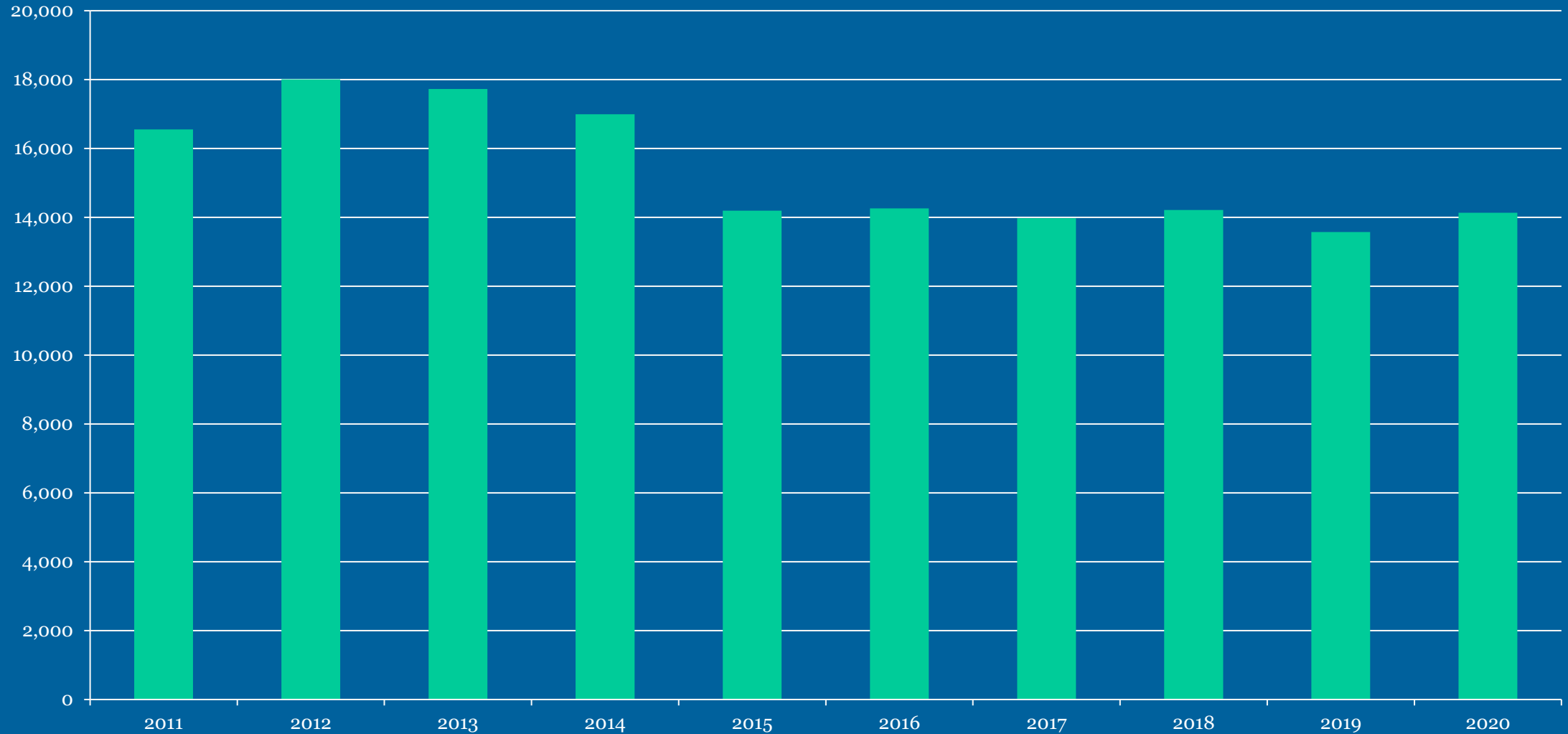
Adjusted 2021 Demand Projection = **15,631 AF**

*Result: Water Shortage Stage not triggered because the Demand Projection is less than the Supply Projection. The City may rescind the Stage 2 declaration effective July 1, 2021.*

# Near-term Demand vs. Supply Comparison



# Historic Water Consumption



## Customers using approximately 20% less water



Lawn  
Replacement  
Rebate



Free Efficient  
Sprinkler  
Nozzles



Smart  
Irrigation  
Controller



Free Water  
Survey



50% off  
Rain  
Barrel



Washing  
Machine Rebate  
Program

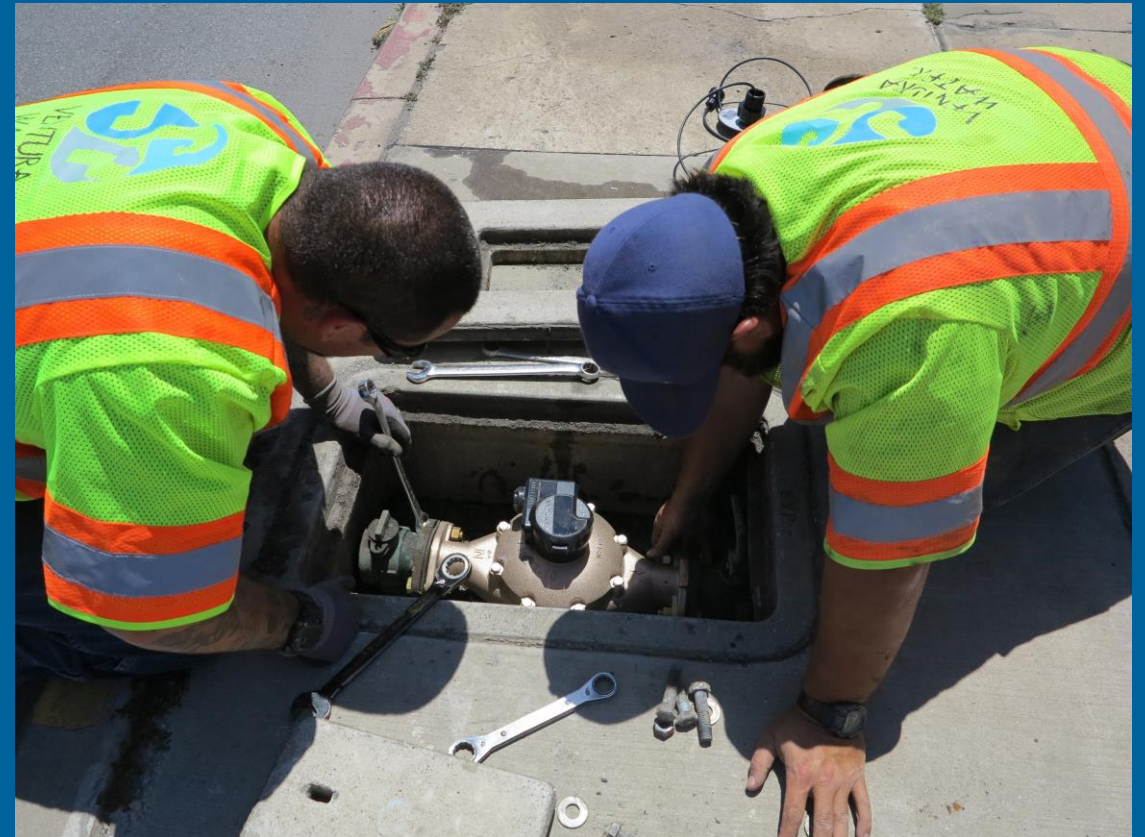


Instant Hot Water  
Recirculating  
Pump



Toilet  
Rebate

- Replace manually-read water meters with smart meters
- Project Benefits
  - Enhanced customer service
  - Improved water savings
  - Near real-time water usage data



# Future Water Supplies

